

# PREFABRICATED SUBSTATION UNIT



- FRIENDLY SOLUTIONS  
- EASY AND SAFE TO OPERATE
- ECONOMICAL - COMPACT  
AND SPACE SAVING DESIGN
- FULLY TYPE TESTED  
- ACCORDING TO IEC 61330



Realizing Your Dreams

**EWT Transformer Sdn Bhd**  
(25685-D)

No. 3299, Jalan Permata 2,  
Arab-Malaysian Industrial Park,  
71800 Nilai, Negeri Sembilan  
Tel: (06)-799 4100 Fax: (06)-799 4113 / 4099  
[www.ewt.com.my](http://www.ewt.com.my)



**EWT Transformer Sdn Bhd**  
(25685-D)

**The EWT Transformer Prefabricated Substation Unit, Model EPS Series has been designed to fulfill the customer's needs.**

- Equipped with :**
- 1) SF6 Ring Main Unit Switchgear
  - 2) Distribution Transformer
  - 3) LV Switchboard

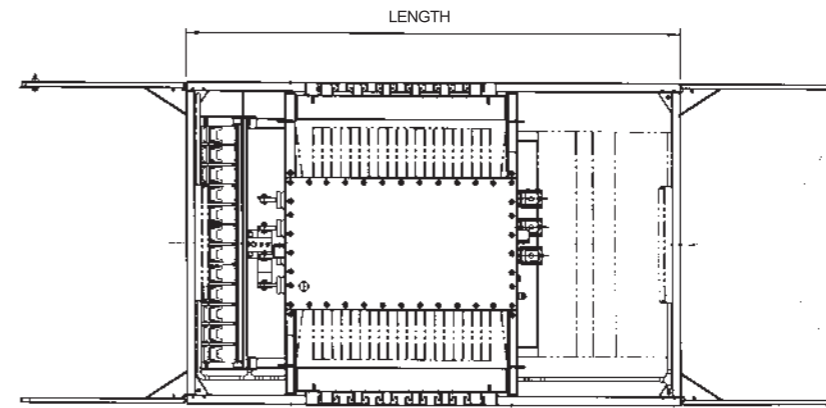
**Advantage**

- 1) Easy access to the RMU and LV Switchgear for operation.
- 2) Separable plug-in type connector at transformer HV side and RMU connections for fast installation.
- 3) Provision for maximum safety in public area.

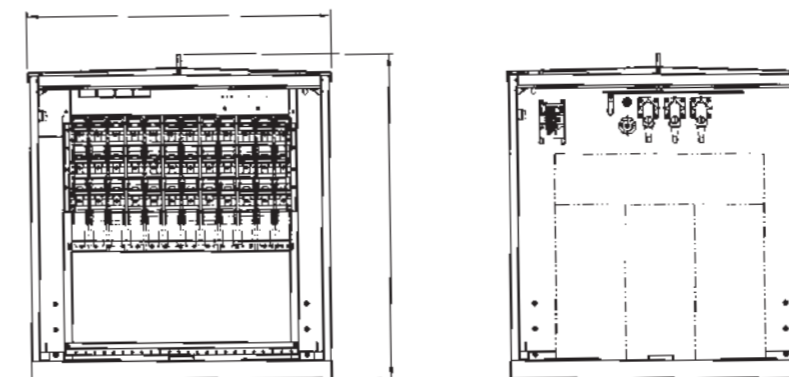
RATING		500kVA	1000kVA
Rated Voltage	(kV)	12	
Withstand Voltage at 50 Hz for 1 min	(kVrms)	28	
Impulse Withstand Voltage 1.2/50ps	(kV peak)	75	
Frequency	(Hz)/No. of Phase	50/3	
Load Break Switch	(nos.)	2	
Rated Current of Switch Disconnecter	(A)	630	
Fuse-Switch	(nos.)	1	
Rated Current of Fuse-Switch	(A)	200	
Fuse Rating for Fuse-Switch	(A)	50	80

RATING		500kVA	1000kVA
Voltage Ratio at No Load	(V)	11,000/433	
Off Circuit Tapping at HV	(%)	±2.5, ±5.0	
Withstand Voltage at 50Hz for 1 min	(kVrms)	28	
Impulse Withstand Voltage	1.2/50 ps(kV peak)	75	
Frequency	(Hz)/No. of Phase	50/3	
Vector Group		Dyn11	
Type of Cooling		ONAN	

RATING		500kVA	1000kVA
Rated Current	(A)	800	1600
Rated Voltage	(V)	1000	1000
Incoming Disconnecter	(A)	800	1600
Outgoing Fuseway	(A) (at 20°C)	400	400
Fuseway	Nos	6	10
Frequency	(Hz)/No. of Phase	50/3	50/3
Outgoing Fuse Rating	(A)	250A-NH2	250A-NH2
Current Transformer Ratio		800/5A Class 1	1600/5A Class 1
Ammeter Max. Demand Indication		3 nos	3 nos
Power Factor meter	(30 mins)	1 no	1 no
Kilowatt Hour Meter (Class 2) (Induction Type)		1 no	1 no



PLAN VIEW



LOW VOLTAGE COMPARTMENT

HIGH VOLTAGE COMPARTMENT

Internal Arc Tested as per IEC 1330 Clause 6	18.4kA at 1 second
Temperature Rise Tested as per IEC 1330 Clause 4.1	Class 10 enclosure
Index Protection (IP) Tested as per IEC 529	IP 35
Sound Level Tested as per IEC 1330 Clause 6	60 dBA
Material / Thickness	Electro Galvanised Sheet / 3.0mm
Base Frame	Hot Dipped Galvanised C-Channel

Overall Dimension		Rating	
		500(kVA)	1000(kVA)
Length	(mm)	2745	2745
Width	(mm)	1725	1725
Height	(mm)	1815	1815
Total Weight	(kg)	3795	4610

Note: For other rating, please consult us.

**Enclosure**

**General Arrangement**

**11kV High Voltage Ring Main Unit (2 nos. Switch Disconnecter & 1 no. of Fuse Switch)**

**Distribution Transformer**

**415V Low Voltage Swichboard - DIN Standard**